

MORNING CALLS

for

solo Bb Clarinet

and

Orchestra

Burton:

Burton Beerman

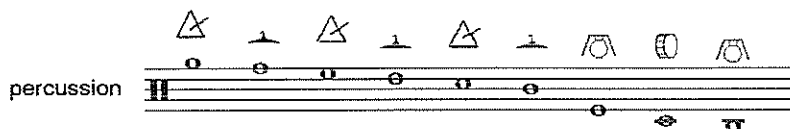
Beautiful
Drill with love to you
Birds

MORNING CALLS

for

solo Bb clarinet and orchestra

Burton Beerman



triangle



suspended cymbals



tam tam



bass drum



pitch instruments

glockenspiel

marimba

sticks



hands



wooden drum sticks



medium mallets

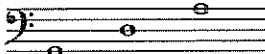


soft mallets



hard mallet

timpani



If no mallet is indicated, the percussionist is to use his own discretion.

orchestra

two flutes
two oboes
two Bb clarinets
two bassoons

4 horns in F
2 Bb trumpets
2 trombones
1 tuba

1 timpani player
1 percussion player

solo clarinet in Bb

violins I and II
viola
violoncello
contra-bass

(multiple players on all string parts)

MORNING CALLS

energetically but lightly

♩ = 90

fls *f* *pp* *mp*

obs *f*

cls Bb *f* *mp*

bns *f*

hms F *mp*

tpis Bb *f*

trbs *f*

tuba *f*

limp *f*

perc *p* *mf* *p < mp*

solo Bb cl *mf*

energetically but lightly

♩ = 90

I *f* *mf* *p* *mf*

II *f*

via *f*

vc *f* *mp* *tutti* *mf* *non-divi* *mp < fp*

cb *f* *pizz.* *pizz. arco* *mf*

score is transposed

This musical score page contains the following instruments and parts:

- fls**: Flute, starting with a *f* dynamic, then *pp*, and *mp*.
- obs**: Oboe, starting with a *f* dynamic.
- cls Bb**: Clarinet in B-flat, starting with a *f mp* dynamic.
- bns**: Bassoon, starting with a *f* dynamic.
- hrns F**: Horn in F, starting with a *f* dynamic.
- tpts Bb**: Trumpet in B-flat, starting with a *f* dynamic.
- trbs**: Trombone, starting with a *f* dynamic, then *pp*, and *mp*.
- tuba**: Tuba, starting with a *f* dynamic.
- timp**: Timpani, starting with a *f* dynamic.
- perc**: Percussion, starting with a *f* dynamic.
- solo Bb cl**: Solo Clarinet in B-flat, starting with a *mf* dynamic.
- vlns I**: Violin I, starting with a *f* dynamic, then *mf*.
- vlns II**: Violin II, starting with a *f* dynamic, then *mf*.
- vla**: Viola, starting with a *f* dynamic, then *mp* and *mf*.
- vc**: Violoncello, starting with a *f* dynamic, then *pizz.*
- cb**: Contrabass, starting with a *f* dynamic.

This page of a musical score includes the following parts and markings:

- fls**: Flute I, starting with a *mp* dynamic and featuring sixteenth-note runs with a '6' fingering.
- obs**: Oboe, starting with a *mp* dynamic and featuring sixteenth-note runs with a '5' fingering.
- cls Bb**: Clarinet in Bb, starting with a *mf* dynamic.
- bns**: Bassoon, starting with a *mf* dynamic.
- hms F**: Horns in F, playing a sustained chord with a *f* dynamic.
- tpts Bb**: Trumpets in Bb, playing a sustained chord with a *f* dynamic.
- trbs**: Trombones, playing a sustained chord with a *f* dynamic.
- tuba**: Tuba, playing a sustained chord with a *f* dynamic.
- timp**: Timpani, playing a rhythmic pattern with a *f* dynamic and a 'dampen' instruction.
- perc**: Percussion, featuring a Glockenspiel part starting with a *p* dynamic and a 'lv' (lute) instruction.
- solo Bb cl**: Solo Clarinet in Bb, featuring a melodic line with dynamics *mf*, *fp*, and *fp*.
- vins**: Violins I and II, with Violin I starting with a *p* dynamic.
- vla**: Viola, starting with a *p* dynamic.
- vc**: Violoncello, starting with a *p* dynamic.
- cb**: Contrabasso, starting with a *p* dynamic.

A

a bit more melancholy

♩ = 80

Freely (follow the solo clarinet)

fls

obs

cls
Bb

bns

hrns
F

tpis
Bb

trbs

tuba

timp

perc

solo
Bb cl

3 1

mp

1 (muted)

f mp

5 5 5

p

f

(with solo cl)

mf

p < mp

3

Freely

fp

fp

mf

a bit more melancholy

♩ = 80

I

II

vlns

vla

vc

cb

divisi

pizz.

f

as high as possible solo

mp

as high as possible solo

mp

as high as possible solo

mp

as high as possible solo

mp

as high as possible solo

mp

arco

solo sul d

p

sul d

solo

3

mp

rit. poco a poco

fls

obs
p *mp*

cls
Bb

bns

hrns
F

tpts
Bb
fp

trbs

tuba

timp
mp

perc
mf

solo
Bb cl
pp *mf*

rit. poco a poco

I
vlns
non-divisi
mp *p*

II
p *mp*

vla

vc
tutti
p *mp*

cb

B

♩ = 77

poco rit. *poco accel.*

fls
obe
cls
Bb
bns
hrns
F
tpis
Bb
trbs
tuba
timp
perc
solo
Bb cl

open

fp

3

mf

mp

fp

3

mf

mp

fp

♩ = 77

poco rit. *poco accel.*

I
vlns
II
via
vc
cb

mf p

solo
sul e

mp

detached
solo

mp

detached
solo

mp

solo arco
sul d

mp

♩ = tempo I

fls *f* *pp* *mp*

obs *f*

cls
Bb *f* *mp*

bns *f*

hrns
F *mp*

tpcs
Bb *f*

trbs *f*

tuba *f*

timp *f*

perc *p* *mf* *p < mp*
with triangle beater

solo
Bb cl *mf*

♩ = tempo I

vlns I *f* *mf* *p* *mf*

vlns II *f*

vla *f*

vc *f* *mp* *tutti* *mf* *non-divi* *mp < fp*

cb *f* *pizz.* *arco* *mf*

divisi *divisi* *solo sui g* *tutti* *non-divi*

♩. = 115

with energy but with a bit of humor



fls

obs

cls
Bb

bns

trms
F

tpts
Bb

trbns

tuba

timp

perc

solo
Bb cl

muted

mf

muted

mf

muted

mf

f

mf

mf

♩. = 115

with energy but with a bit of humor



vlns
i

vlns
ii

vla

vc

cb

pizz.

mf

pizz.

mf

1

fls
obs
cls
Bb
bns

hrns
F

tpns
Bb

trbs

tuba

tmp

perc

soia
Bb cl

i
vlns

ii

via

vc

cb

p *mf* *p*

p *mf* *p*

Detailed description: This page of a musical score, numbered 10, contains 18 staves. The top five staves are for woodwinds: flute (fls), oboe (obs), clarinet in B-flat (cls Bb), and bassoon (bns). The next five staves are for brass: horn in F (hrns F), trumpet in B-flat (tpns Bb), trombone (trbs), and tuba. The next three staves are for percussion: timpani (tmp), and a general percussion part (perc). The next two staves are for woodwinds: saxophone in A-flat (soia Bb cl). The bottom six staves are for strings: violin I (i vlns), violin II (ii vlns), viola (via), violoncello (vc), and double bass (cb). The score is in 3/8 time and features a first ending bracketed with a '1' above it. Dynamics include piano (p), mezzo-forte (mf), and piano (p). The flute part has a melodic line with accents and dynamics. The saxophone part has a similar melodic line with dynamics. The brass and woodwind parts provide harmonic support with chords and rhythmic patterns.

This musical score page, numbered 11, contains the following parts and markings:

- fls:** Flute part with a melodic line starting in the first measure.
- obs:** Oboe part, mostly silent.
- cis Bb:** Clarinet in B-flat part, mostly silent.
- bns:** Bassoon part, mostly silent.
- hrns F:** Horns in F part, playing a rhythmic pattern of eighth notes.
- tpts Bb:** Trumpets in B-flat part, playing a rhythmic pattern of eighth notes.
- trbs:** Trombones part, playing a rhythmic pattern of eighth notes.
- tuba:** Tuba part, playing a rhythmic pattern of eighth notes.
- timp:** Timpani part, mostly silent.
- perc:** Percussion part, mostly silent.
- solo Bb cl:** Solo Clarinet in B-flat part, playing a melodic line.
- vlns I & II:** Violins I and II parts, playing a rhythmic pattern of eighth notes.
- via:** Viola part, playing a rhythmic pattern of eighth notes.
- vc:** Violoncello part, playing a rhythmic pattern of eighth notes with *pizz.* (pizzicato) markings and *mf* dynamics.
- cb:** Contrabasso part, playing a rhythmic pattern of eighth notes with *pizz.* (pizzicato) markings and *mf* dynamics.

Dynamic markings include *mp* (mezzo-piano) and *mf* (mezzo-forte).

This page of a musical score contains the following parts and markings:

- Woodwinds:** fls, obs, cls Bb, bns, hrns F, tpts Bb, trbs, tuba.
- Percussion:** timp, perc.
- Strings:** solo Bb cl, vlns I & II, vla, vc, cb.

Key markings and dynamics include:

- Rehearsal mark: $\text{♩} = \text{♩}$
- Dynamic markings: *f*, *mf*, *choked*.
- Performance instructions: *divi*, *pizz.*
- Tempo/Style: $\text{♩} = \text{♩}$ (repeated)

This page of a musical score contains the following parts and markings:

- fls:** Flute 1, starting with a first finger fingering (1) and dynamic markings of *mf* and *mp*.
- obs:** Oboe, starting with a first finger fingering (1) and dynamic marking of *mp*.
- cls Bb:** Clarinet in B-flat, with a rest.
- tns:** Bassoon, starting with a first finger fingering (1) and dynamic markings of *mf* and *p*.
- hrns F:** Horn in F, with a rest.
- tpis Bb:** Trumpet in B-flat, with a rest.
- trbs:** Trombone, with a rest.
- tuba:** Tuba, with a rest.
- timp:** Timpani, with dynamic markings of *mf* and *mp*.
- perc:** Percussion, with dynamic marking of *mp* and "choked" markings.
- solo Bb cl:** Solo Clarinet in B-flat, with dynamic markings of *mf*, *mp*, and *p*.
- vlns I:** Violin I, marked "non-divisi" and *mp*.
- vlns II:** Violin II, with a rest.
- vla:** Viola, with a rest.
- vc:** Violoncello, with dynamic markings of *mf* and *fp*, and a "sul g" marking.
- cb:** Contrabass, with dynamic markings of *mf* and "pizz." (pizzicato).

This page of a musical score contains the following parts and markings:

- fls**: Flute part, starting with a first finger fingering (1).
- obs**: Oboe part, marked *mp*.
- cls Bb**: Clarinet in B-flat part, starting with a first finger fingering (1).
- brns**: Brass section (trumpets, trombones, tuba) with rests.
- hrns F**: Horn in F part, with dynamics *p* and *mf*.
- tpts Bb**: Trumpet in B-flat part, with rests.
- trbs**: Trombone part, with rests.
- tuba**: Tuba part, with rests.
- timp**: Timpani part, with rests.
- perc**: Percussion part, including a **Mari** (maracas) section, with dynamics *mp* and *mf*.
- solc Bb**: Solo Clarinet in B-flat part, with dynamics *fp* and *mf*.
- vlns**: Violins I and II parts, with dynamics *mp*.
- vla**: Viola part, with rests.
- vc**: Violoncello part, marked *pizz.* and *mp*.
- cb**: Contrabass part, with rests.

This page of a musical score includes the following parts and markings:

- fls** (Flute): Part 1, dynamic *f*.
- obs** (Oboe): Part 1, dynamic *f*.
- cfs Bb** (Clarinet in B-flat): Part 1, dynamic *f*.
- bns** (Bassoon): Part 1, dynamic *f*.
- hrns F** (Horn in F): Part 1, dynamic *f*.
- trpts Bb** (Trumpet in B-flat): Part 1, dynamic *f*.
- trbns** (Trumpet in B-flat): Part 1, dynamic *fp*.
- tuba**: Part 1, dynamic *f*.
- timp** (Timpani): Part 1, dynamic *f*.
- perc** (Percussion): Includes *Click* markings and triangle symbols.
- solo Bb cl** (Solo Clarinet in B-flat): Part 1, dynamic *f*.
- vlns** (Violins): Part I and II, dynamic *f*, with *divisi* marking.
- vla** (Viola): Part 1, dynamic *f*.
- vc** (Violoncello): Part 1, dynamic *f*, with *arco* marking.
- cb** (Cello): Part 1, dynamic *f*, with *arco* marking.

Additional markings include *unis* (unison) for the strings and various dynamic and articulation symbols throughout the score.

E

This musical score page, numbered 18, is for section E. It features a variety of instruments including flutes, oboes, clarinets, bassoons, horns, trumpets, trombones, tuba, timpani, percussion, solo bassoon/clarinet, and a string section. The score is written in 4/4 time and includes dynamic markings such as *mp*, *f*, *p*, *mf*, *fp*, and *divisi*. Performance instructions like *1*, *a2*, and *Mari* are also present. The woodwind and string parts have melodic lines with slurs and accents, while the brass and percussion parts provide harmonic support and rhythmic patterns.